



# People and Organisational Development Directorate

**In Post – Substantive**

**In Post – Fix Term**

**Vacant**

**As of October 2021**



People Senior Team

Deputy Director of People and OD

Head of People and Culture

People and  
Culture Officer

Senior People Partner  
Operations

Senior People Partner  
Operations

Senior People Partner- Strategy,  
Analytics, Resourcing and  
Transformation

**Operations**

- 1. Acute and Urgent Care Services
- 2. Secure and Offender Services

**Specialist**

- 1. Medical Workforce (out of scope)
- 2. Emergency Planning

**Operations**

- 1. ICCR and Older People and Specialties
- 2. Corporate (incl SSL)

Specialist

- 1. Wellbeing and OH
- 2. Policy and Tool Kit Development,
- 3. Reporting
- 4. National T&C's

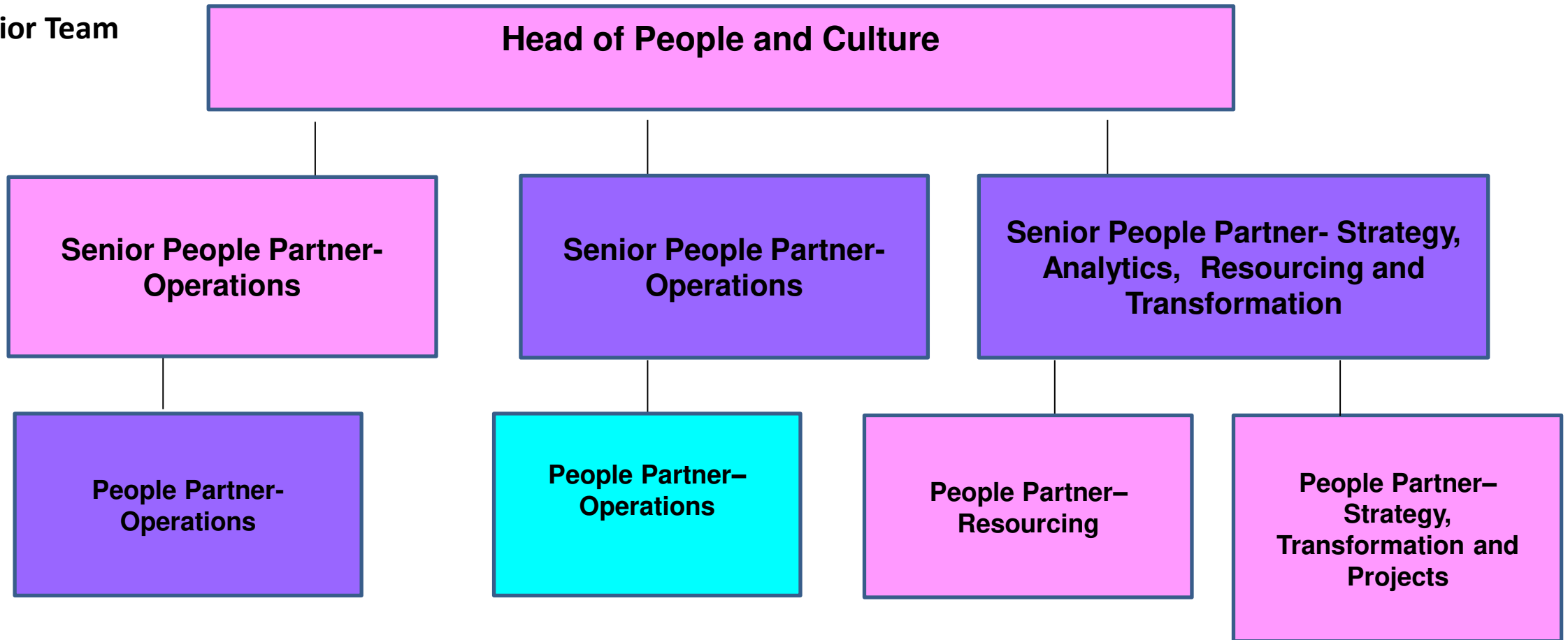
- 1. Resourcing (TSS out of scope)
- 2. Workforce Information and Analytics
- 3. Workforce Planning and Transformation
- 4. People Strategy oversight, Review and Governance
- 5. Projects



People Senior Team

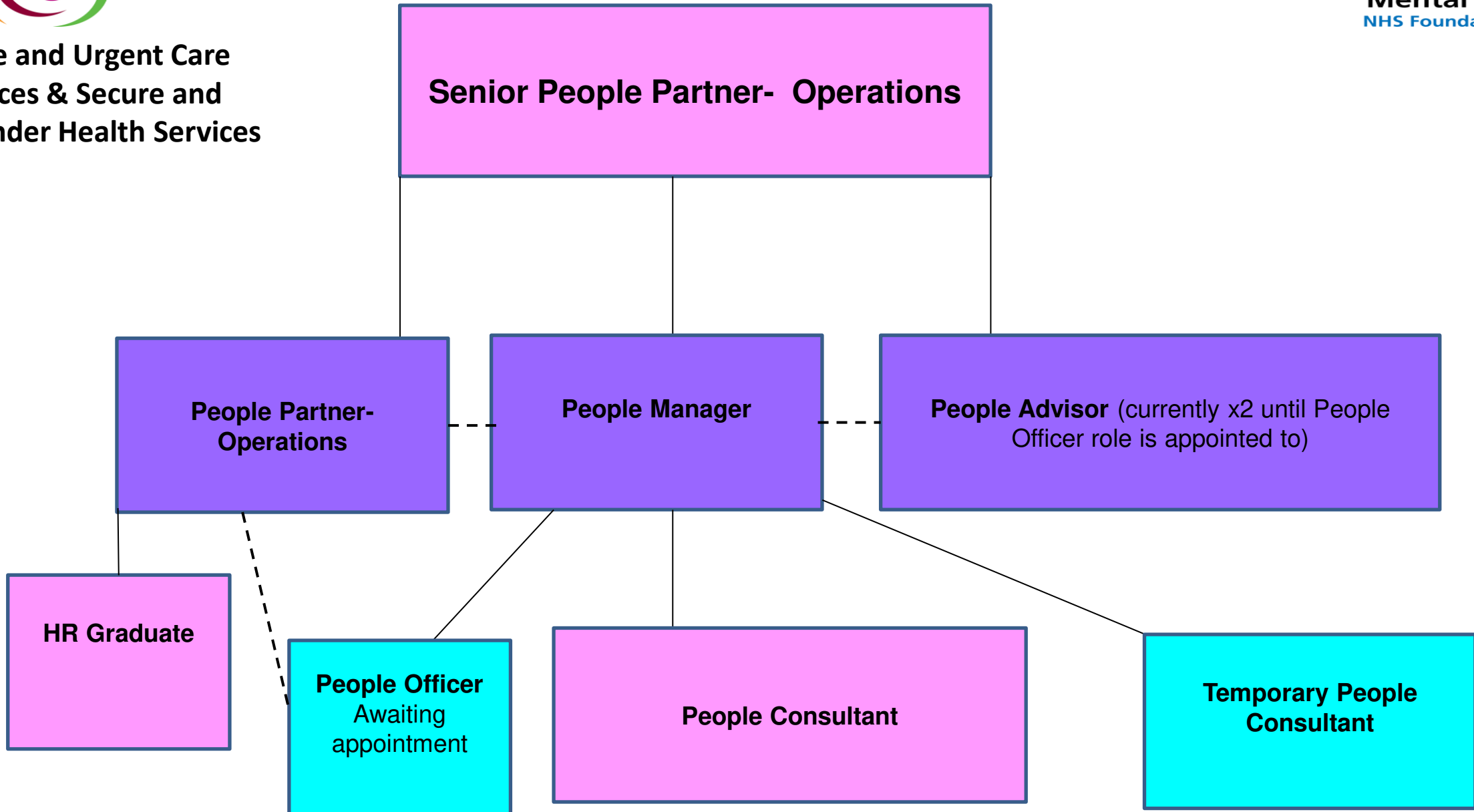


Birmingham and Solihull  
Mental Health  
NHS Foundation Trust





**Acute and Urgent Care  
Services & Secure and  
Offender Health Services**

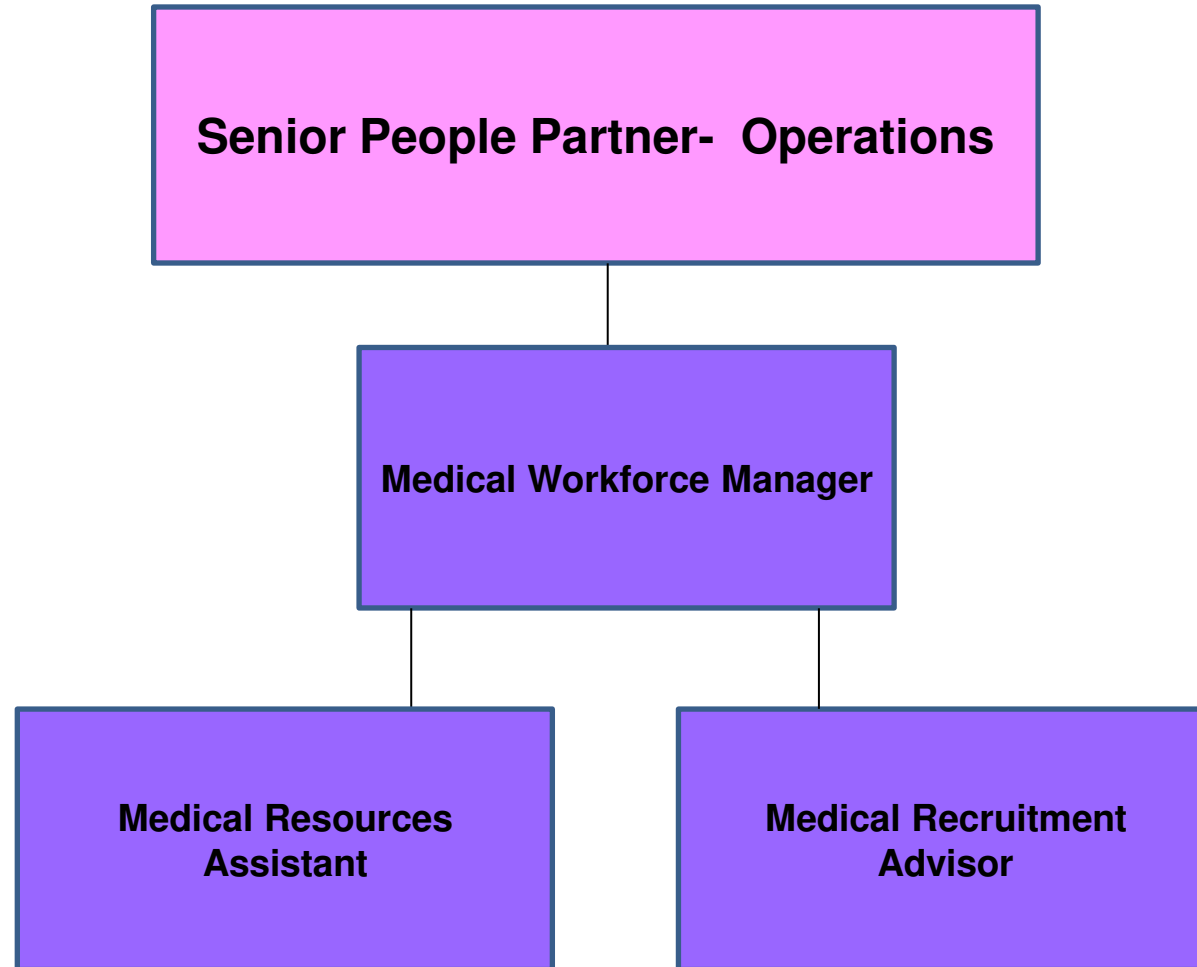




**Medical Workforce**



**Birmingham and Solihull  
Mental Health**  
NHS Foundation Trust

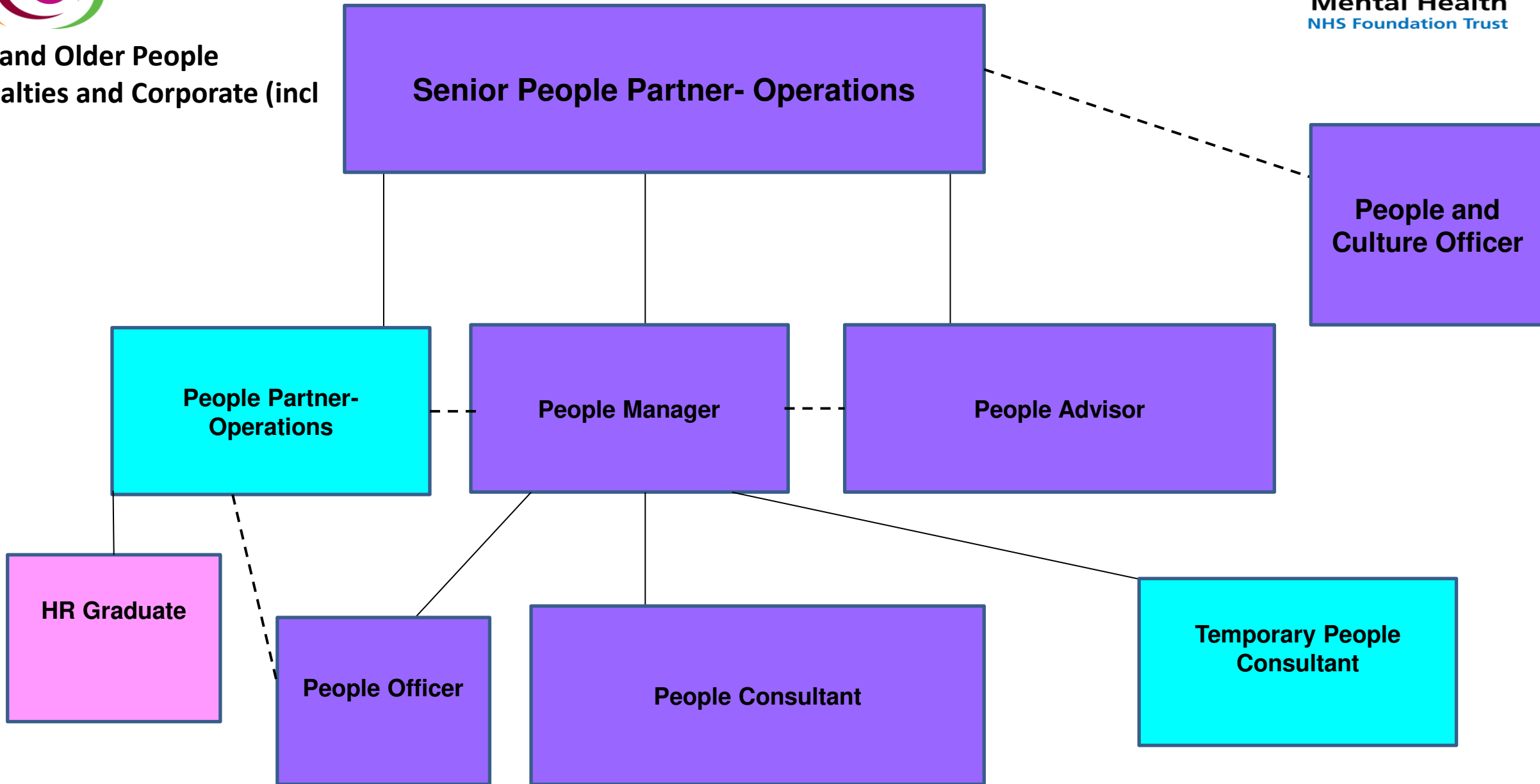




ICCR and Older People  
Specialties and Corporate (incl  
SSL)



Birmingham and Solihull  
Mental Health  
NHS Foundation Trust





**People Strategy, Resourcing,  
Analytics and Transformation**

**Senior People Partner- Strategy,  
Analytics, Resourcing and  
Transformation**

**People Partner-  
Resourcing**

**People Partner-  
Strategy,  
Transformation and  
Projects**

**TSS**

**Recruitment Consultant**

**Recruitment Consultant**

**X2 People Modelling and  
Analytics Leads**  
Awaiting appointment

**Resourcing and  
Workforce  
Transformation and  
Projects Support**

**Recruitment  
Assistant**

**Apprentice**

**People Analytics Officer**

**People Analytics  
support officer 0.5**