

## **FOI 0280/2023 Response**

### **Request**

Please could you provide a structure chart for the following departments, including job titles and staff member names where possible;

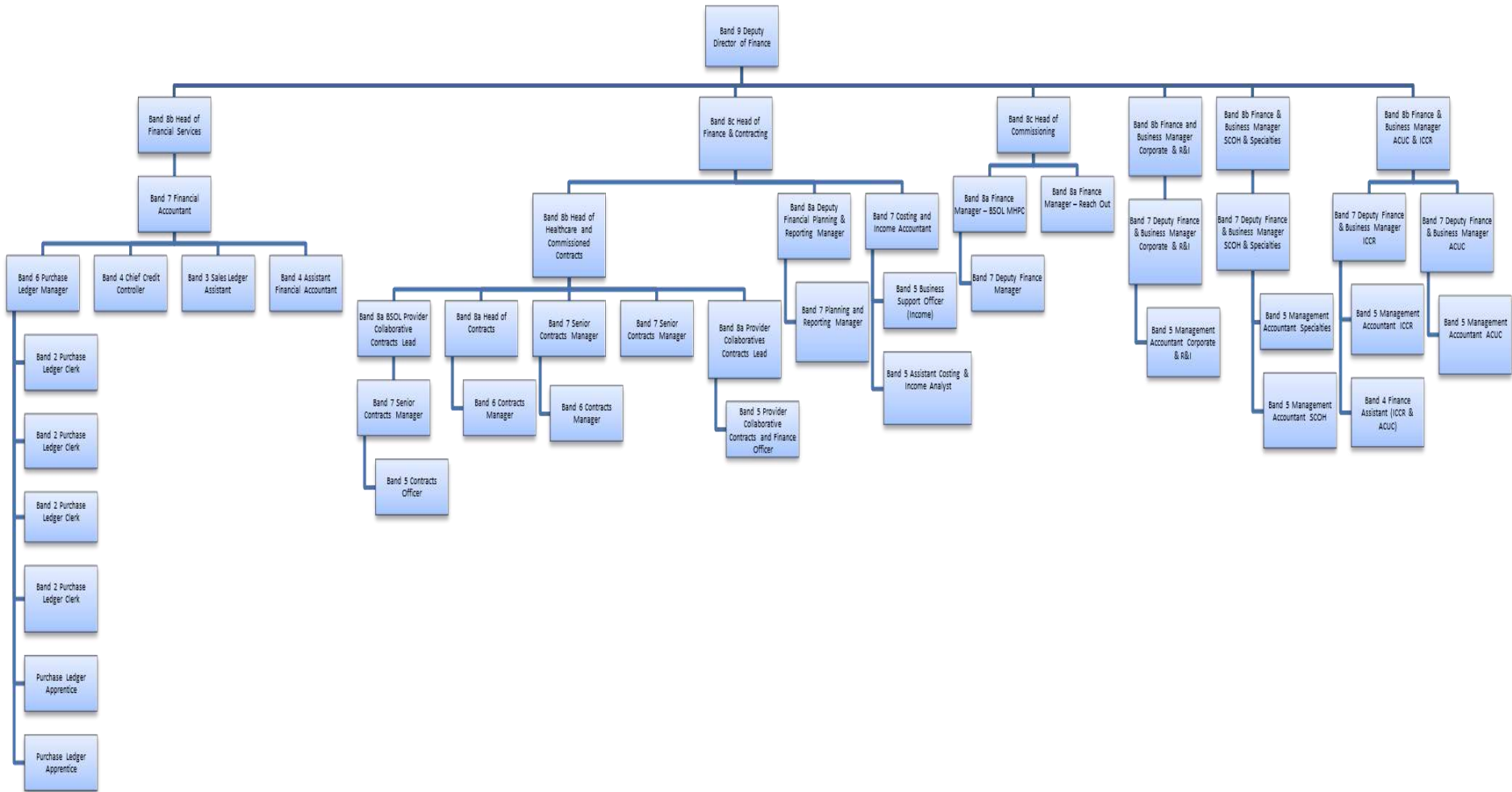
- Finance & Accountancy
- Procurement
- Estates, Facilities and Capital Development

### **Response**

Please see below for the requested departmental structures and note the following

- Estates and Facilities department is run by Summerhill Services Limited (SSL), a wholly owned subsidiary of the Trust.
- The Trust is unable to provide the names of the individual staff members within the chart. This is because we do not routinely release staff information for those under a band 8c role.
- The procurement function for BSMHFT is now provider by the BSOL Provider Collaborative. The detail around structure can be obtained by them.

## Finance Department Structure Chart



# Summerhill Services Structure

